



MANIFESTO

The Future We Want:
Perspectives of over 5,000 Young People
on A.I. for our Society

As torchbearers of tomorrow, we, the youth, advocate for Artificial Intelligence (AI) that amplifies the good in society, not the excess.

OUR KEY MESSAGE

Our Generation, clear-eyed and pragmatic, understands the dual-edged nature of AI. **We neither idolize nor fear it;** instead, we recognise its potential to revolutionise education, combat climate change, and enhance healthcare, while also being acutely aware of its limitations and risks.

AI should serve humanity without compromising our core values or the planet's health. We demand a cautious, balanced approach to AI integration—one that enhances human capabilities and addresses critical social issues without succumbing to the lure of unchecked technological progress.

If AI is to be a force for ending violence, hunger, discrimination, and the climate crisis, **we must regulate its use to preserve our humanity, critical thinking, and interpersonal connections.**

As today's youth, we will be the leaders of tomorrow.

Our engagement in discussions about AI's role in our future is crucial. We call on policymakers, educators, technologists, and all stakeholders to heed our voices and collaborate with us in **creating an AI-driven world that upholds ethical standards, promotes well-being, and safeguards life on our planet.**

GOVERNANCE FIRST: AN ETHICAL, FAIR, AND REGULATED INTEGRATION OF A.I. IN OUR LIVES



We, the youth, advocate for a multi-stakeholder approach to AI governance.

Effective AI governance requires the involvement of all relevant stakeholders, including governments, academia, civil society, and industry. We must establish transparent, accountable, and inclusive frameworks to guide AI development and use, ensuring it aligns with human values and ethical standards. Citizens' assemblies and autonomous agencies could play a key role in overseeing AI's impact and ensuring that it benefits society as a whole.



We demand the ethical development and deployment of AI in our society.

This includes maintaining human oversight to ensure that AI supports rather than replaces essential human elements, such as empathy, creativity, and ethical judgment. AI should be used to assist—and not substitute—the irreplaceable value of human interactions, promote equity and common welfare of society, and facilitate our cultural, artistic, and leisurely endeavours.



We emphasise the need for unbiased AI systems that promote fairness.

AI must be developed with strict ethical guidelines to prevent perpetuating existing biases or introducing new ones, ensuring equitable access and benefits for all. To achieve this, those who code and develop these systems must come from diverse social and ethnic backgrounds and represent different genders.



We insist that AI must prioritise data protection and privacy.

Personal information within AI systems must be safeguarded with stringent measures against breaches and misuse. We cannot compromise on privacy, viewing it as a fundamental right that must be protected from unauthorised exploitation and ubiquitous surveillance by state or private actors.



AI IN EDUCATION: EMBRACING TECHNOLOGY WHILE MAINTAINING HUMANITY AT THE HEART OF OUR LEARNING EXPERIENCES



We, the youth, call for a balanced approach to AI in education, where it complements the role of teachers but never replaces them.

AI should streamline administrative tasks, personalise learning experiences, and provide tailored feedback, allowing educators to focus on what they do best: nurturing students' social and emotional development. Teachers play a crucial role in fostering creativity, empathy, and critical thinking—elements that AI cannot replicate. This human touch makes education meaningful and impactful, and it must remain at the heart of the learning experience. AI should aid both teachers and students in enhancing the quality of education.



We advocate for strict guidelines and oversight to prevent AI from compromising our autonomy and critical thinking.

AI should aid in learning, not become a tool for cheating. We believe that AI tools like ChatGPT, character.ai or Quillbot should not be banned but must be rigorously guided. We need clear guidelines to use these technologies appropriately, enhancing capabilities rather than relying on them to do our work, thereby losing our critical thinking and autonomy. Academic integrity should be preserved above all.



We see AI as a potential catalyst for rethinking assessment methods in education.

Traditional exams and homework should be reevaluated to prevent over-reliance on AI and to promote creativity, critical thinking, and genuine understanding. Innovative assessment approaches that encourage originality and effort must be developed. This will require us to think out of the box and redefine what constitutes learning achievements in a world where knowledge is more accessible than ever before.



We recognise the importance of equitable access to AI technologies in education.

We, the youth, are acutely aware of the digital divide and its impact on education. As AI technologies are developed for educational purposes, it is imperative to redouble efforts to close this digital gap, insisting on universal access to these tools. We demand initiatives to guarantee equitable access to AI technologies for all students, regardless of their socio-economic background, promoting a fair and inclusive educational environment.



AI & WELLBEING: REALISING OUR POTENTIAL WITH MINDFUL INTEGRATION



We, the youth, acknowledge that AI is reshaping our society in profound ways and call for mindful integration.

AI's role in creating virtual influencers and conversation spaces can distort reality and lead to increased isolation. We must balance these innovations with efforts to maintain and strengthen real-world social connections, emphasising the irreplaceable value of human interactions and community building.

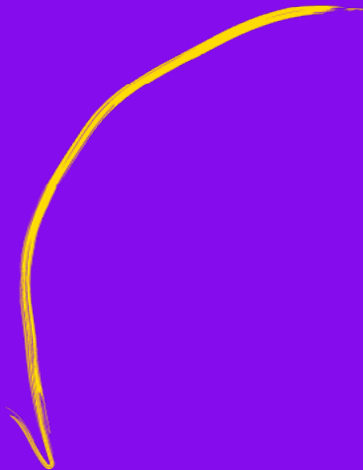
AI-generated content often sets impossible standards that negatively impact mental health. We call for responsible AI use that promotes realistic and healthy role models, especially for younger generations.

The integration of AI in the arts and intellectual property raises important questions. We stress the need for ethical guidelines that protect human creativity and originality, ensuring AI complements rather than replaces human artistic endeavours.



We, the youth, believe that AI can enhance our capabilities and optimise our efforts, but we stay cautious against over-reliance and potential dependencies.

We acknowledge the benefits of AI in improving our daily lives, from optimal meal planning and physical activity monitoring to enhancing sports performance and injury prevention. AI can help us become the best versions of ourselves, aiding in performance monitoring. However, we must be mindful of the risk of becoming overly dependent on AI, which could lead to laziness and a loss of essential human skills and critical thinking.





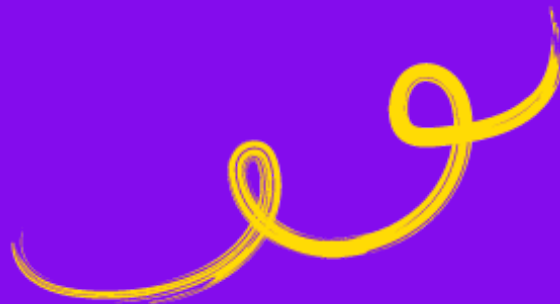
We recognise AI's potential to transform the workplace but emphasise the need to preserve human interaction.

AI can definitely optimize tasks and improve efficiency. However, we value the interpersonal relationships and social interactions at work, which are essential for creativity, problem-solving, and overall well-being. While AI can take over more menial tasks, we must focus on developing skills that AI cannot replicate, such as creativity, critical thinking, and emotional intelligence. This will ensure that the workforce remains dynamic and resilient despite technological advancements.



We stress the importance of using AI in healthcare to complement, not replace, human professionals.

AI offers significant benefits in diagnosing and monitoring health conditions, supporting mental health, and ensuring access to healthcare for all. It can provide early warnings for diseases, support therapeutic journeys, and complement the work of healthcare professionals, particularly in areas with limited access to medical services. However, AI cannot replace the empathy and compassion essential in a doctor-patient relationship. While AI can assist in patient care, the human connection remains irreplaceable and should not be ignored.



AI & ENVIRONMENT: WALKING HAND-IN-HAND WITH AI TO SHAPE OUR SUSTAINABLE FUTURE



We, the youth, acknowledge the dual impact of AI on the environment.

While AI can contribute significantly to environmental protection, it also poses risks, such as an increased carbon footprint and electronic waste. We demand vigilant monitoring and regulation of AI's environmental impact to ensure it does not exacerbate the issues it aims to solve. AI development and deployment must be sustainable and responsible, balancing technological advancements with ecological concerns.



We insist on equitable access and robust regulations to govern AI's use in environmental protection.

Policies must ensure that AI supports human decision-making rather than replacing it. Global cooperation is essential to establish ethical frameworks and standards for AI's role in environmental sustainability. Regulations should guarantee equitable access to AI technologies, ensuring all nations and communities benefit from its potential.



We see AI as a vital tool for promoting sustainability in our daily lives.

AI should be used to optimize energy consumption, improve waste management, and support eco-friendly behaviours. Integrating AI into everyday practices can make our lifestyles more sustainable and environmentally friendly. AI must be developed and used to reduce our ecological impact and foster a balanced approach to living.





We acknowledge AI's transformative potential across various sectors: agriculture, climate science, resource management, species preservation, and environmental conservation.

AI should help foster sustainability and address global challenges like hunger and climate change. It must prioritise inclusivity, benefiting all stakeholders, especially small-scale farmers and developing regions. Additionally, AI should advance climate modelling, aid in disaster mitigation, and promote sustainable resource management worldwide. AI should also be utilised to monitor natural habitats, identify endangered species, and prevent poaching and overfishing. Responsibly leveraging AI can lead to innovative solutions for environmental preservation and equitable resource management, safeguarding our planet for future generations.



**YOUTH
TALKS**

ON AI